



FAQs

Version 2010 or higher

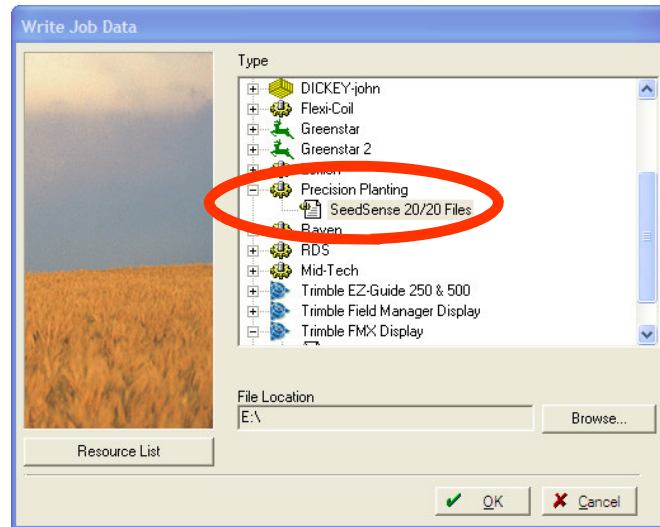
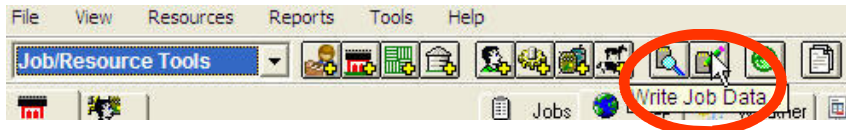
Writing VRA Maps for Precision Planting Equipment

This FAQ is for writing VRA maps for use with the Precision Planting "20/20 RowFlow" system. Precision Planting has released many updates during the Spring season. If you notice problems with a map, try downloading the latest version of software on your 20/20 system.



Precision Planting RowFlow Software Updates:
<http://www.precisionplanting.com/20-20RowFlow/rowflowupdates>

1. Select the **Write Job Data** button to write Client/Farms/Fields and Supplies to the USB storage drive.
 Warning The Precision Planting FODD does not currently support writing VRA data. So any Planned VRA Jobs that have been marked as Work-Orders for a Console will not be written out.

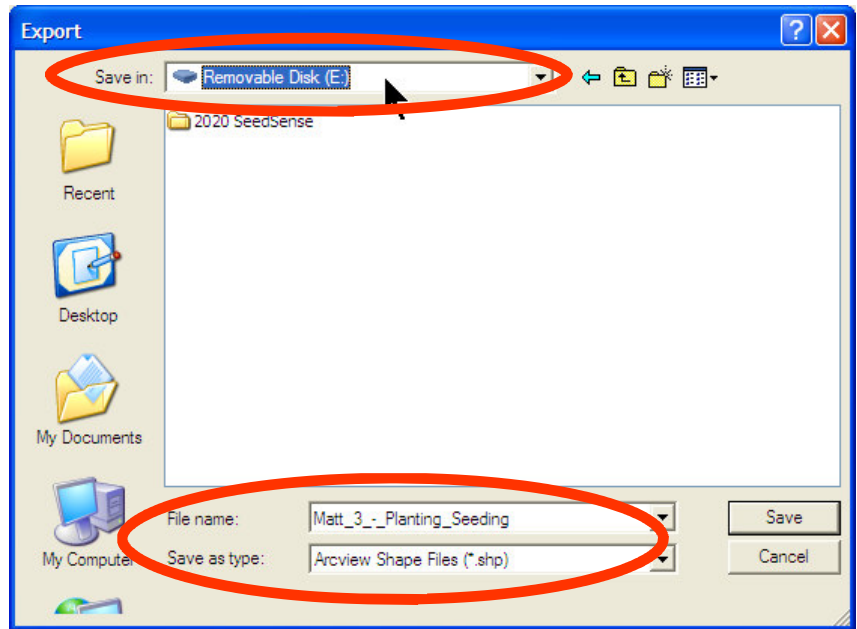


2. Once the Client/Farms/Fields and Supplies are written to the USB storage drive, proceed to the next step. Now focus on selecting your Planned VRA Jobs (from the Job tab). These jobs should be written out to the root of the USB Drive as ArcView Shape Files.

3. Right-click on the Job(s) and select **Export**.



4. Select the **ArcView Shape File (*.shp)** option from the "Save as type" drop-down list.
5. Browse the "Save in" drop-down list and select your USB storage drive location. The example to the right shows us selecting the Removable Disk (E:) drive. Your drive may differ.
6. Proceed to save the file in the root of the USB drive (such as E:\).
7. You are now finished. The USB storage device can now be used with the Precision Planting Monitor for Fields & VRA.



PRECISION PLANTING EQUIPMENT INSTRUCTIONS

1. To load the Field Names and VRA Map on the Precision Planting Monitor

- A. Tap on the Setup button
- B. Tap on the Data tab
- C. Tap on the Import button
- D. Tap on "Planting Config" to load Client/Farm/Field and Supplies. The monitor should tell you that it successfully loaded the configuration file.
- E. Tap on "Prescrip/Boundary" to load VRA maps. The program should tell you that it successfully loaded the VRA map .shp file. Note that you do not need to browse and select the .shp files.

2. To load a VRA Map

- A. Go to the Setup area and go to the Plant tab
- B. Tap on Field name and select the name of the field.
- C. Tap on "Prescription" and select the Shape File.
- D. Select the attribute that you wish to use.
- E. Select the Make Active button
- F. You can view the map by selecting "Home" then "Map" and then "Large Map"

www.farmworks.com

© 2010, Trimble Navigation Limited. All rights reserved. Trimble and Farm Works are trademarks of Trimble Navigation Limited, registered in the United States and in other countries. All other trademarks are the property of their respective owners.

Trimble Navigation Limited
Farm Works Software Division
P.O. Box 250
Hamilton, IN 46742 USA
+1-800-225-2848 (Sales)
+1-800-282-4103 (Support)



Integrated Management Solutions