

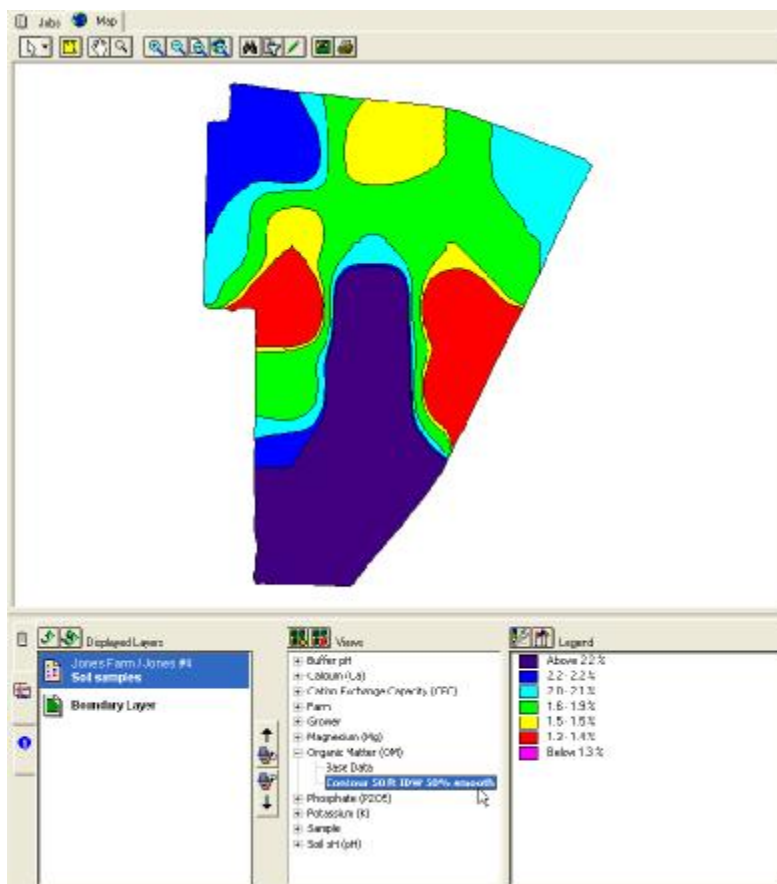
## Creating Variable Rate Prescription Maps

You can use soil type maps as well as any soil sampling maps that you have imported into Farm Site to create Variable Rate Application (VRA) maps. You can export the application maps that you create out of Farm Site for use with almost all commonly used variable rate controllers and hardware systems including Site Mate – VRA.

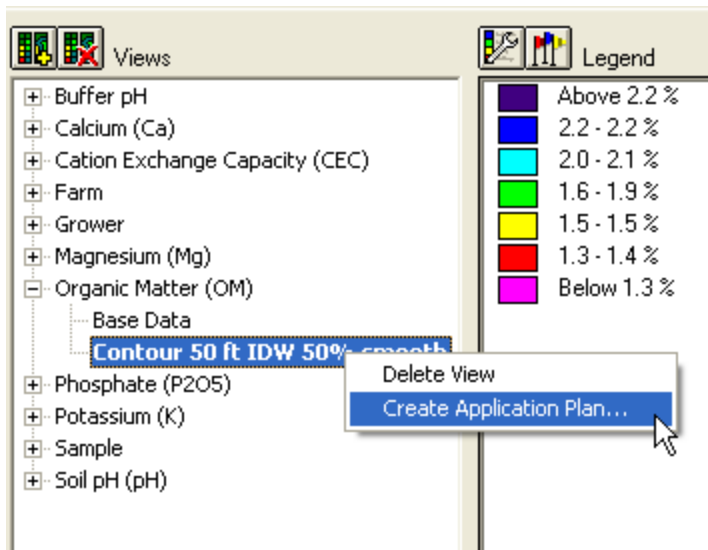
With Site Mate – VRA installed on a handheld computer, laptop, or Titan RT, you can connect to a GPS receiver and controller capable of variable rate to change the application rate based on the position in the field. The Site Mate – VRA will tell the controller what rate to apply based on the map that you have created.

To create a VRA map:

1. Add the people, machines, and supplies that will be used for the job to the **Working Group** box. You can opt to only add the supplies used and leave the people and equipment until later if preferred. See the Farm Trac manual for more information.
2. On the **Farm** tab, locate the layer that you want to create a variable rate map from and double click on it to display it in the **Map** tab. This layer must be an area layer that has different zones (soil type layer, for example) or a points layer that grid or contour views have been created. To create your own layer with custom drawn zones, see the following section of this manual.
3. Select the attribute and the view that you want to create the VRA map from in the **Views** box.



- Right click on the view and select **Create Application Plan**.

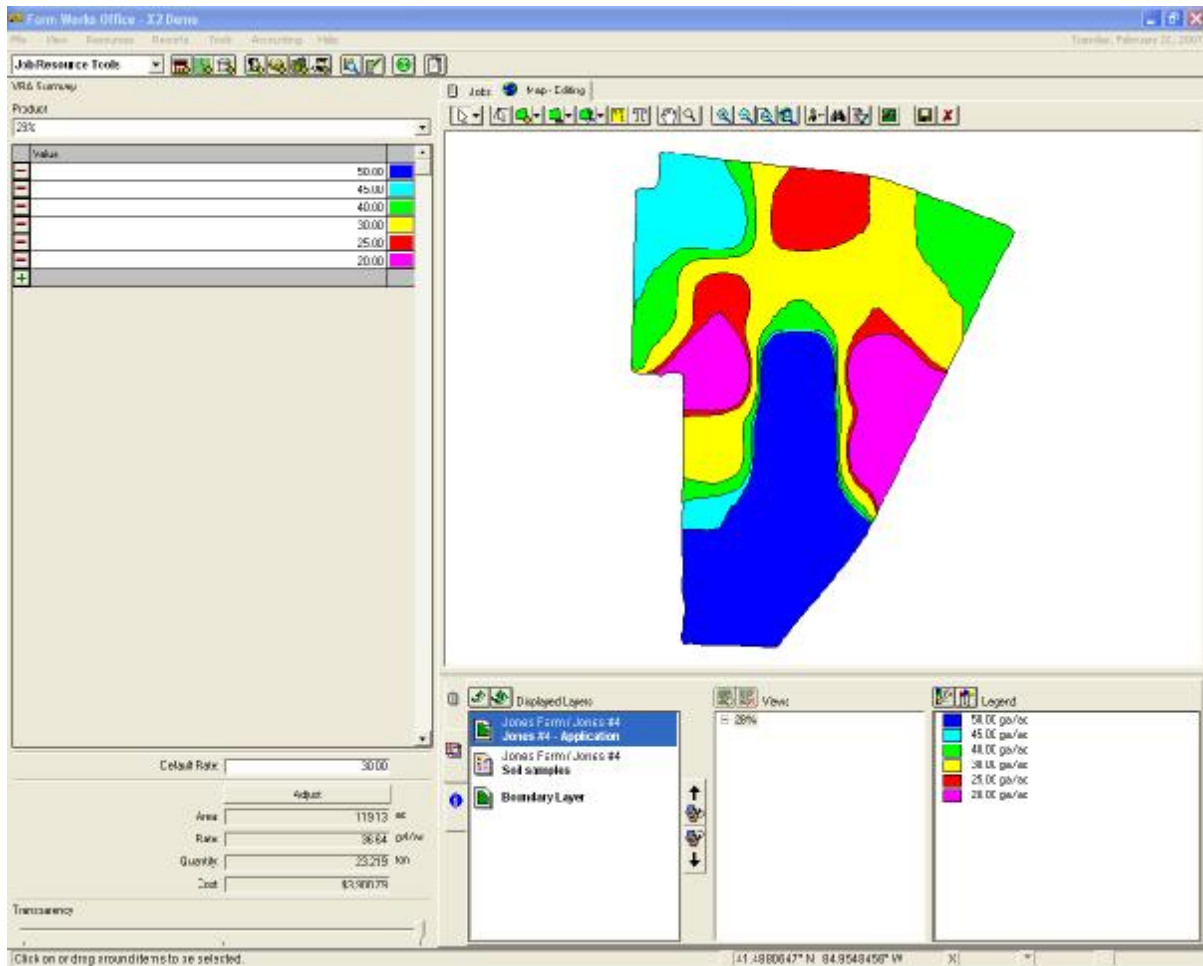


The 'Farming' dialog box is titled 'Add' and contains a table with the following data:

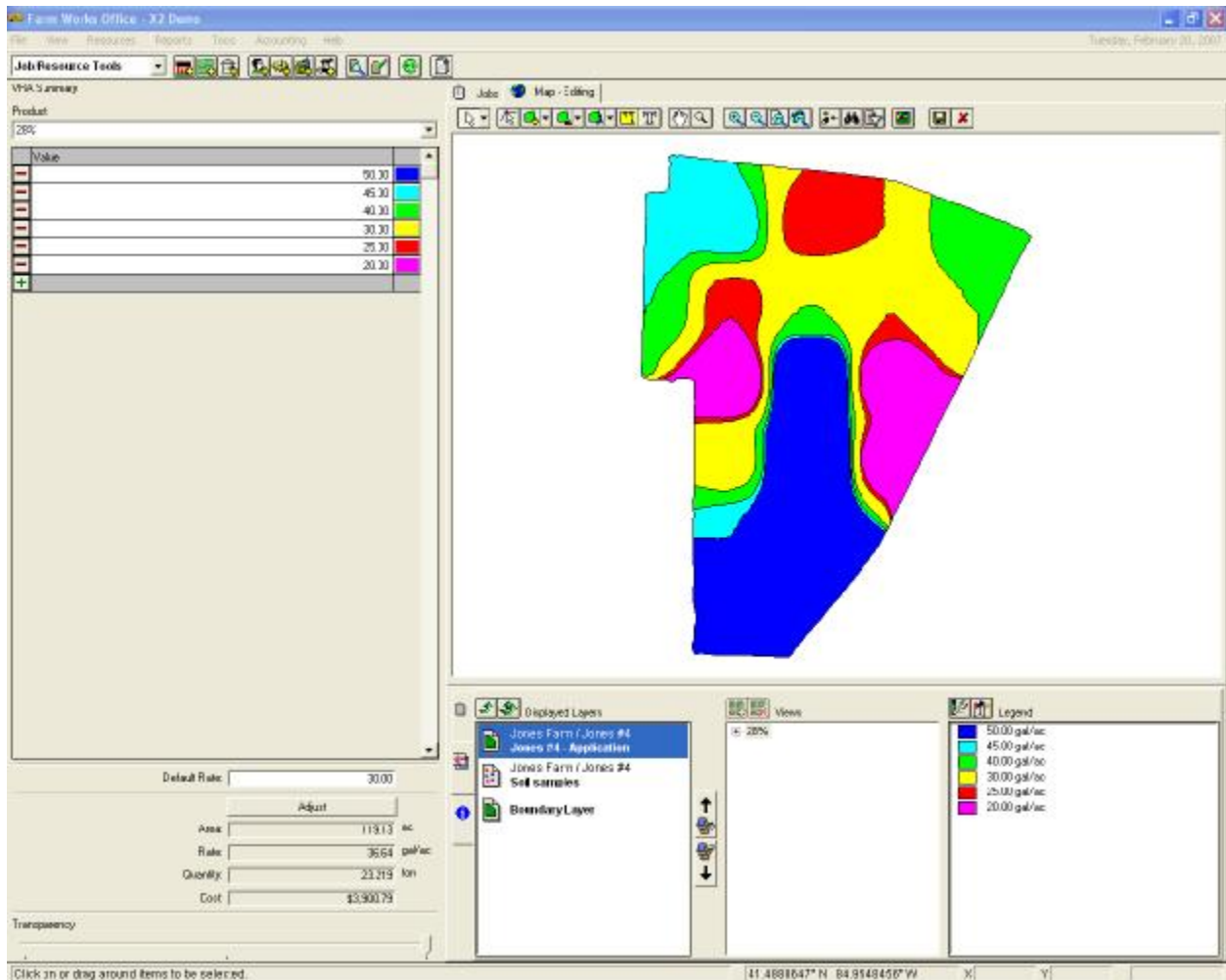
Job Name	Jones #4 - Applicatio
Field Name	Jones #4
Crop Enterprise	
Job Type	Application
Console ID	
Area Farmed	119.00
Start Date	2/20/2007
Start Time	
Stop Date	2/20/2007
Stop Time	
Job Hours	0.00
Operator	
28%	Delete
Variable Rate Application	<input checked="" type="checkbox"/>
Machine	
Applied Area	119.00
Planned Rate (gal/ac)	30.00
Qty. Used (ton)	18.989
Cost (\$/ton)	168.00

At the bottom of the dialog box are 'OK' and 'Cancel' buttons.

- The Farming dialog box will appear to create a planned VRA job.
- Make any necessary modifications to the plan and press **OK**.



7. Enter the **Default Rate** which will be the rate that is applied any time the machine travels outside of the VR map.



8. Select the product to be varied and enter the prescription values into the cells that correspond with the zone colors showing on the map.

VRA Summary

Product  
28%

	Value	
-	50.00	Blue
-	45.00	Cyan
-	40.00	Green
-	30.00	Yellow
-	25.00	Red
-	20.00	Magenta
+		

9. Farm Site automatically calculates the average rate you will be applying over the total acres as well as a total quantity and cost. This information can be extremely helpful when purchasing supplies.

Default Rate:

Area:  ac

Rate:  gal/ac

Quantity:  ton

Cost:

Transparency

10. You may want to adjust the total quantity to be used on the job. Press the **Adjust** button and make the changes. This will change the rate in each zone to compensate for the added/subtracted total quantity.

**Adjust**

Product Totals

Total Quantity  ton

Total Cost

11. If there is a layer displayed underneath the application layer, you can view it through the new application layer by adjusting the **Transparency**. Slide the **Transparency** slider to view items beneath the current layer.