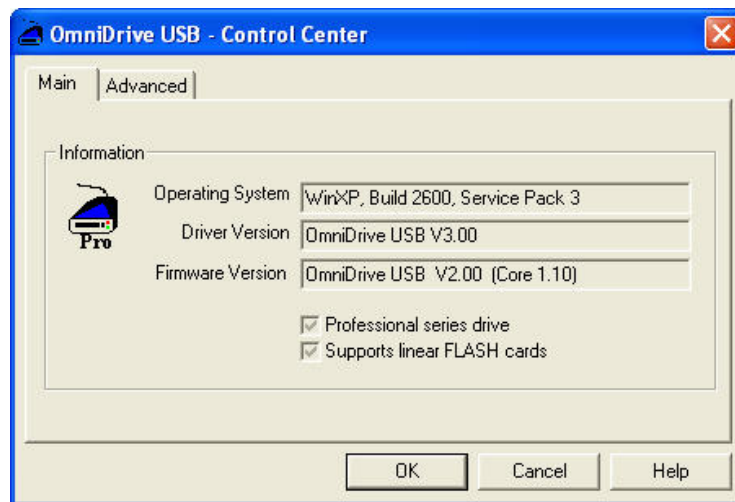


AGCO Fieldstar Omni Drive & Farm Works

In order to Read Job Data from the Fieldstar Omni Drive into Farm Works user must have the Omni Drive Pro USB Driver installed. This is in addition to having the FODD Fieldstar Data driver installed. This driver is for all Windows Operating Systems, XP, Vista & 7.

Installing Omni Drive Pro USB:

1. Follow the link to obtain the driver:
ftp://office.ctndata.com/pub/AGCO/CD_430/Tools/Omni%20Drive%20Pro%20USB%20Driver/Disk1/
2. Once in the Disk1 folder double left click on the Setup.exe file to begin the install process.
3. Continue through the install wizard to complete the install.
4. Once the install is completed hook the Omni Drive system to the Computer.
5. Go to Start > All Programs or Programs> OmniDrive USB Pro > Omni Control.
6. In the Omni Control program verify on the Main Tab that the Driver Version is OmniDrive USB V3.00. If the driver is correct select OK and begin the import process using Farm Works. If the Driver Version says USBSTOR (Windows generic driver) continue to the next steps. (The generic driver will be more common with Windows Vista and 7).



AGCO Fieldstar Omni Drive & Farm Works

Correcting the USBSTOR (Windows generic driver) Driver Version

7. While on the Omni Control Center select the Advanced Tab

8. Left click on the Install Button in the section Install CSM Professional Software.

9. Continue through the Install Wizard setup.

10. Select the Main Tab to verify that the Driver Version has changed from USBSTOR (Windows generic driver) to OmniDrive USB V3.00.

11. Once the correct driver is present, select OK and begin the import process using Farm Works.

