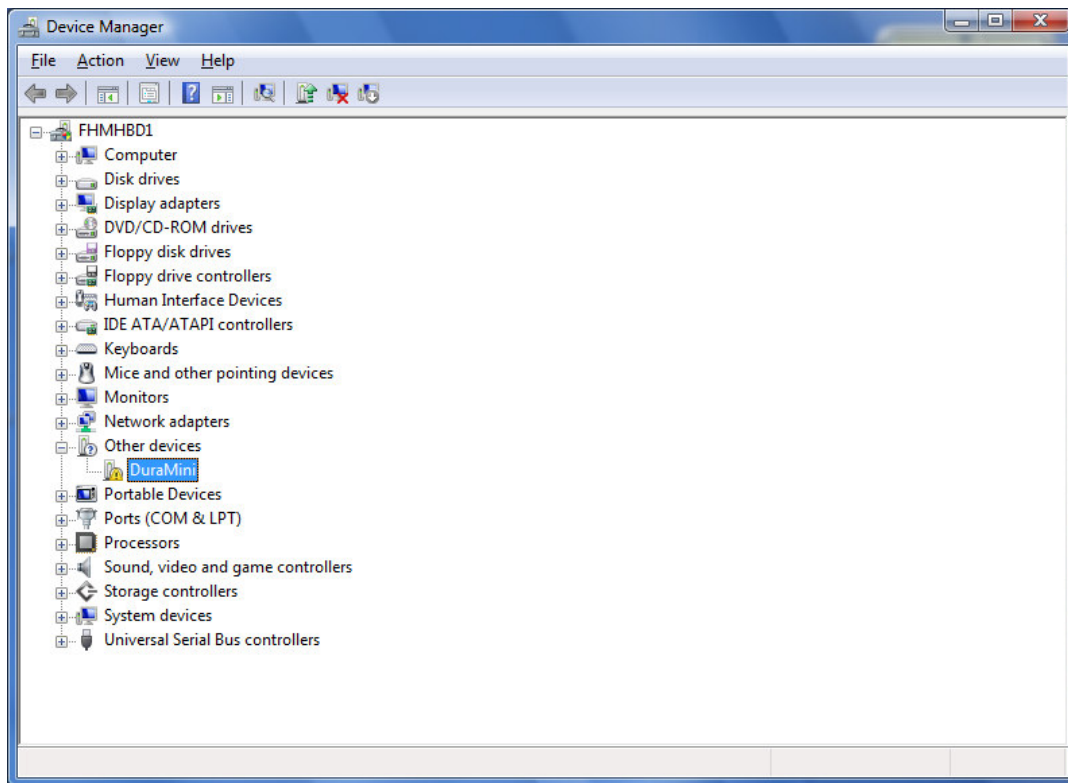
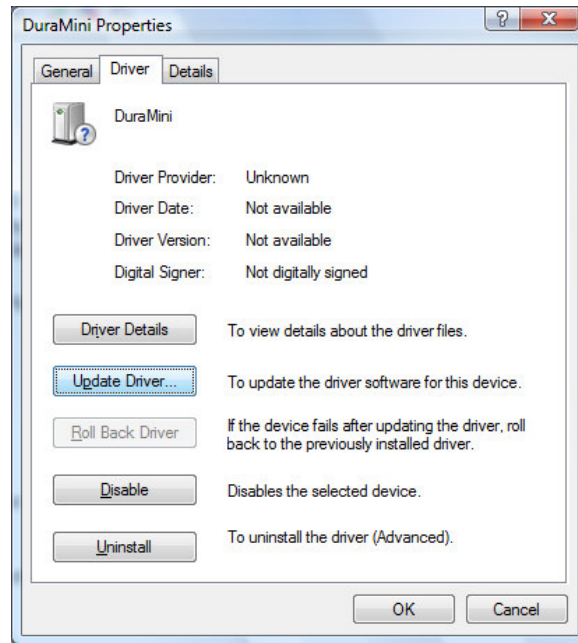


## Configuring Windows Vista / Windows Mobile Device Center for communication with DuraMaxHG

1. On the Windows Vista PC, install Windows Mobile Device Center (WMDC) 6.1  
Download from: <http://www.microsoft.com/windowsmobile/devicecenter.mspx>
2. Connect the DuraMaxHG to the PC with the USB cable
3. Close the “*Found New Hardware*” wizard
4. From the Start Menu, click on “*Control Panel*”
5. Double-click on “*Device Manager*”
6. Under “*Other devices*”, right-click on the “*Duramini*” device

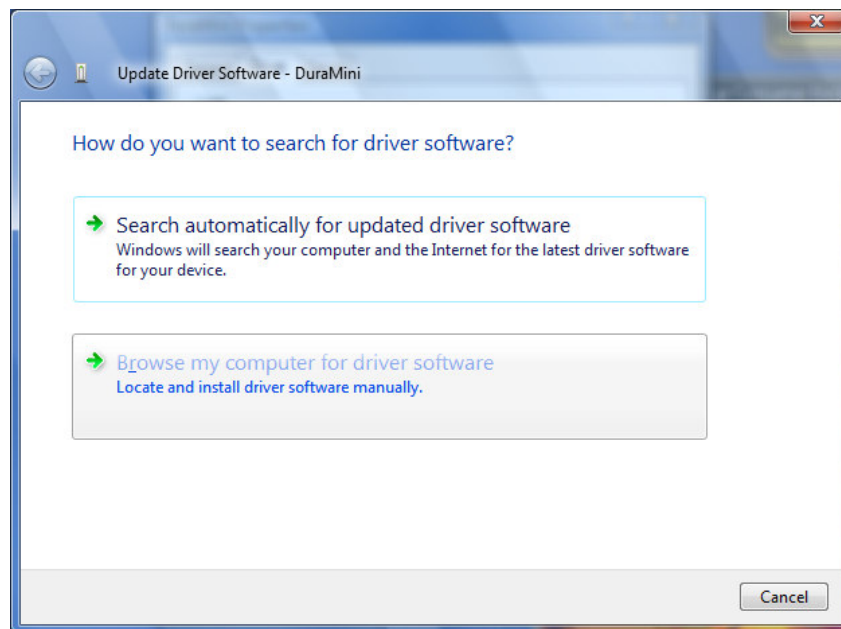


7. Click on “*Properties*”
8. Click on “*Driver*” tab

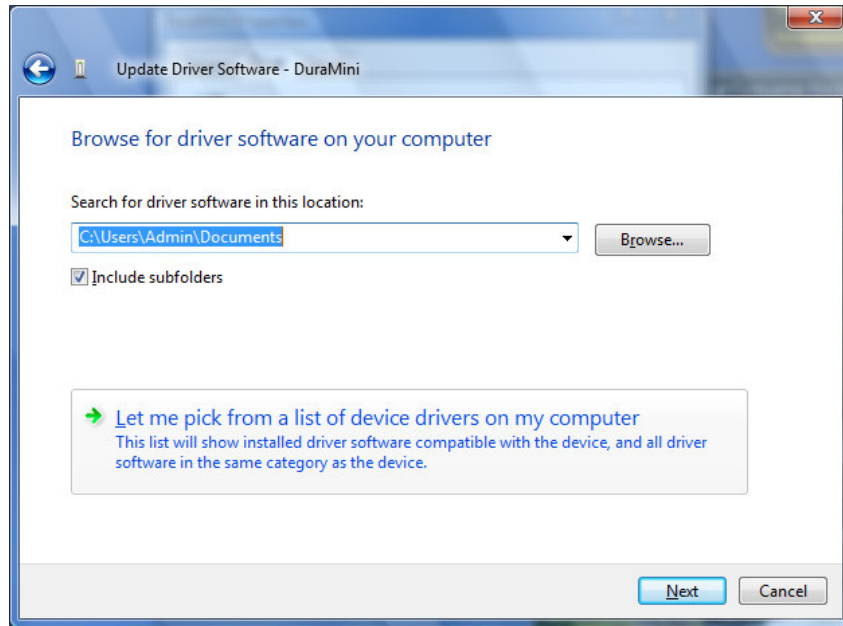


9. Click *"Update Driver"* button

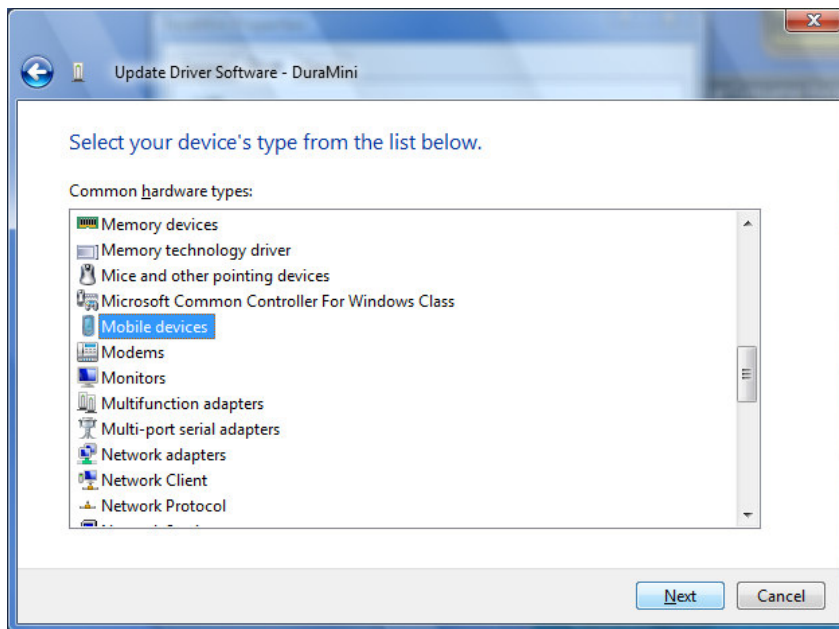
10. Select *"Browse my computer for driver software"*



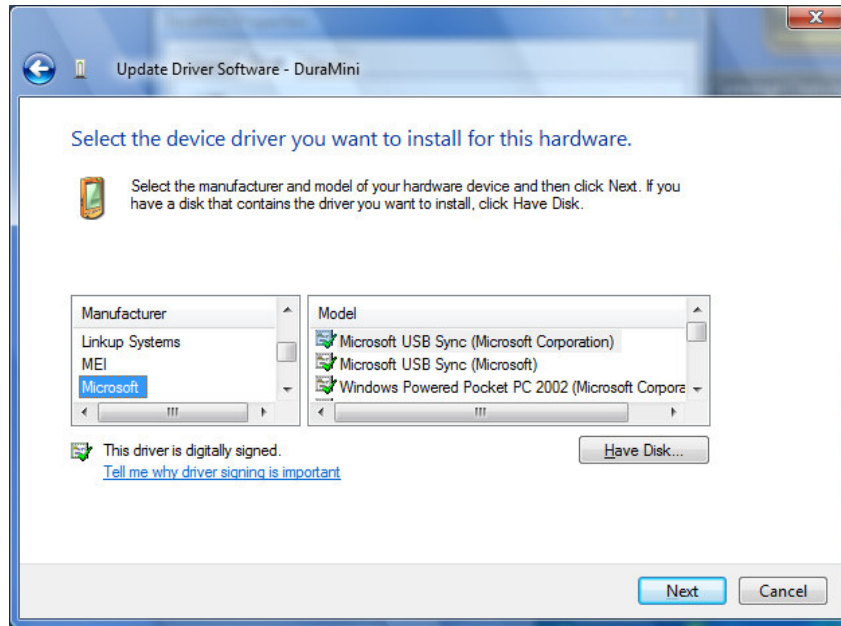
11. Select *"Let me pick from a list of device drivers on my computer"*



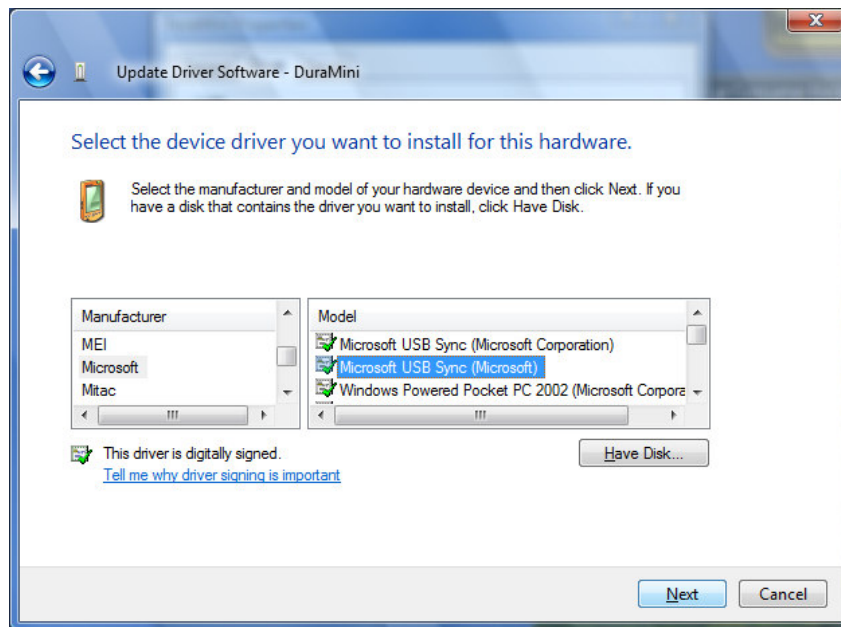
12. The next dialog should say “*Select your device’s type from the list below*”.  
From the list, select “*Mobile devices*”



13. In the “*Manufacturer*” list, select “**Microsoft**”

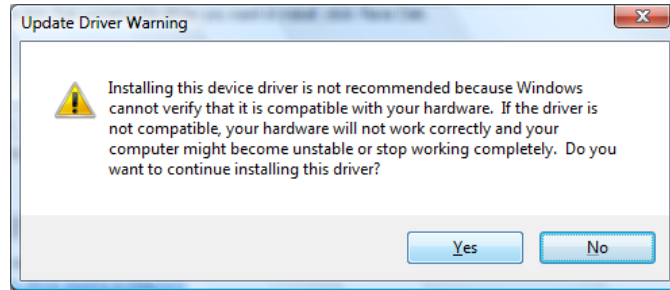


14. In the "Model" list, select "**Microsoft USB Sync (Microsoft)**"

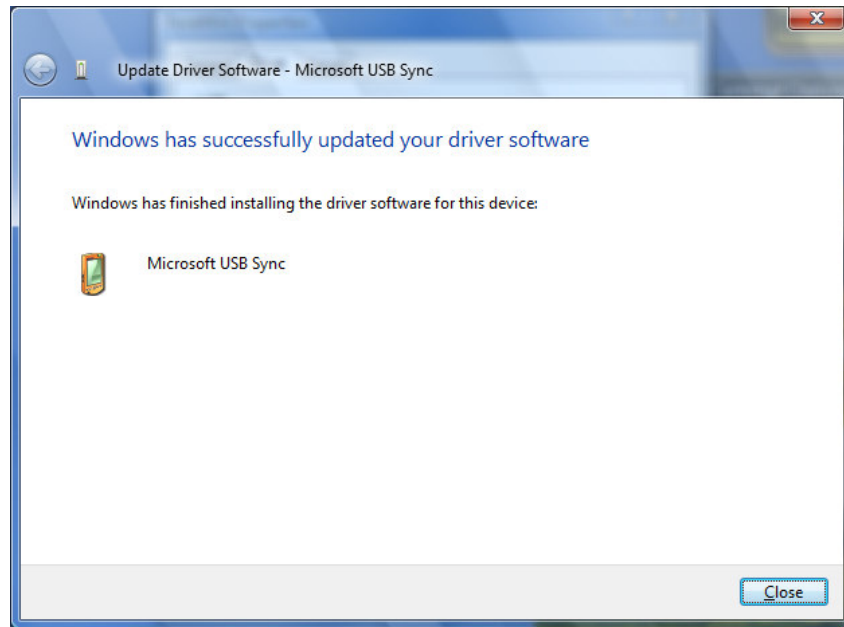


15. Click "Next"

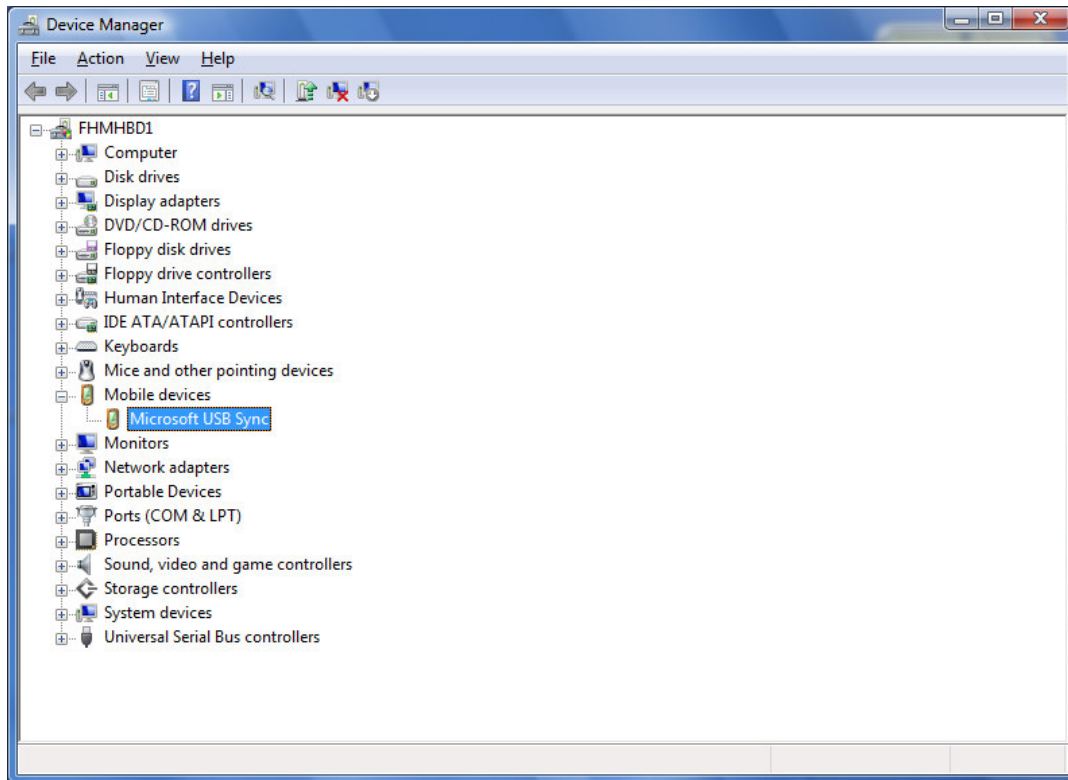
16. Click "Yes" in the "Update Driver Warning" message box



17. Wait for driver installation to complete



18. Once driver installation is complete, a connection should automatically be established with the DuraMaxHG. In Device Manager, the DuraMaxHG should now be listed under "*Mobile devices*" as "**Microsoft USB Sync**".



19. You have the option to **Set Up Your Device** or **Connect Without Setting Up Your Device**.
20. If you choose to Connect Without Setting Up Your Device, you will still be able to Sync files through Farm Works. But you will not have the Sync button within Mobile Device Center unless you Set up Your Device.
21. **Set Up Your Device** will allow you to select what type of information to be synchronized between the DuraMaxHG and the computer.

22. **Windows Mobile Device Center** can now be used to access files on the DuraMaxHG!

