

# MicroGuide Lightbar Set-up

## STEP 1: Physical Connections

1. Connect the power cable.
2. Attach the round connector firmly but gently into the back of the MicroGuide Bluetooth lightbar.
3. Plug the cigarette lighter connector of the same power cable into the power port of the vehicle.
4. Connect the GPS receiver to the mobile device. The mobile device must contain Bluetooth in order for this to work. If you are unsure about the mobile device having Bluetooth, check with vendor who you purchased it from.



## STEP 2: Turning On the Bluetooth Wireless Connection

Tap the **Bluetooth** icon in the lower right-hand corner of the **Today** window. Once you are in the iPAQ Wireless Setup screen, tap on the Bluetooth Icon.



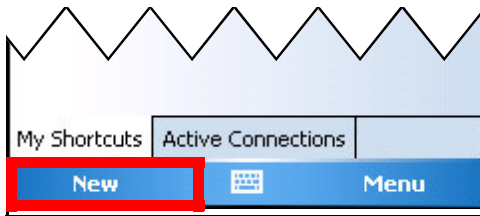
**Bluetooth Off**



**Bluetooth On**

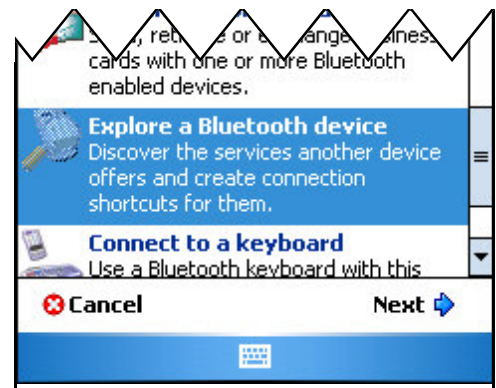
## STEP 3: Setting Up the Bluetooth Wireless Connection

1. Tap on the **Manager Button**. (May say *Bluetooth Manager* on some models.)

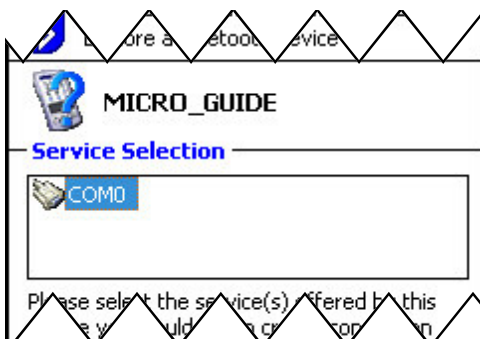


2. Next select the “New” button at the bottom of the screen to create a new connection.

3. Scroll down and choose **Explore a Bluetooth Device**.



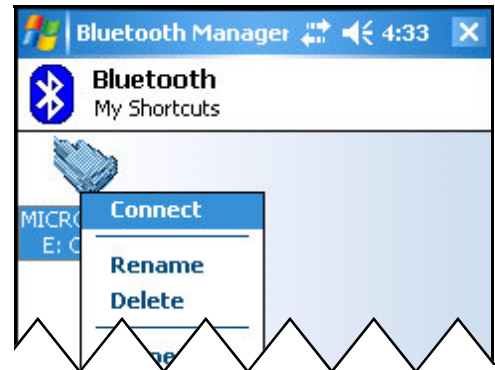
4. An icon for MicroGuide will appear with a “?” mark on it, tap on the icon, then select “com0”, and then tap on “NEXT” at the bottom of the screen



5. Click on Finish.

### STEP 3: Setting Up the Bluetooth Wireless Connection (Continued)

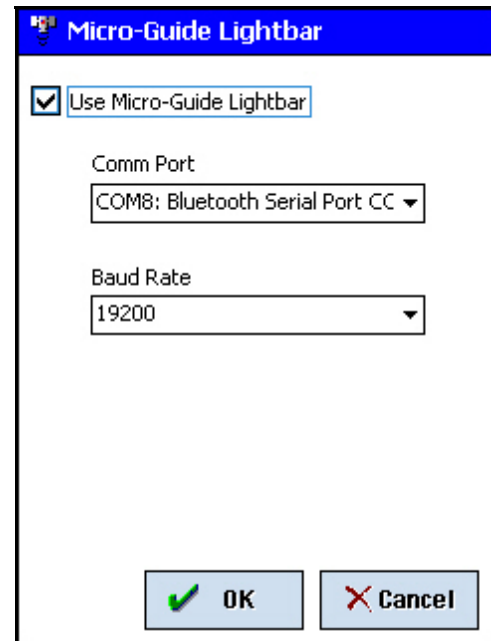
6. Tap and hold on the MicroGuide icon until you get the option to “connect”.
7. Then you can close the Bluetooth Manager by selecting the X in the top right corner.
8. Next click the OK button at the top of the next screen.



### STEP 4: Site Mate Settings

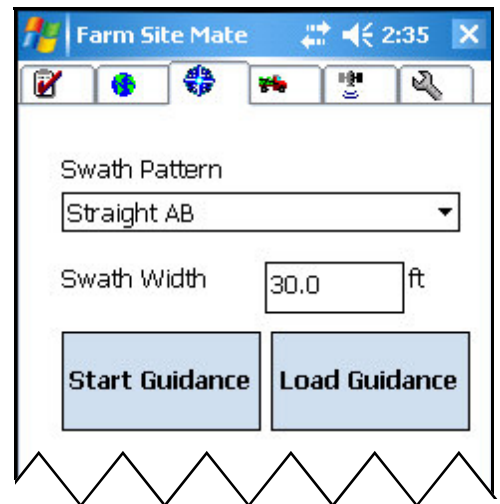
When you get in Site Mate, go to the **Configure** Tab:

- Choose **Guide Mate** then **MicroGuide**.
- Select the **Use MicroGuide Lightbar** check box.
- In the **Comm Port** list, enter the correct port for Bluetooth (this will usually be **COM 8**).
- In the **Baud Rate** list, tap the correct baud for the MicroGuide lightbar (this will most likely be **19200**), and tap **OK**.

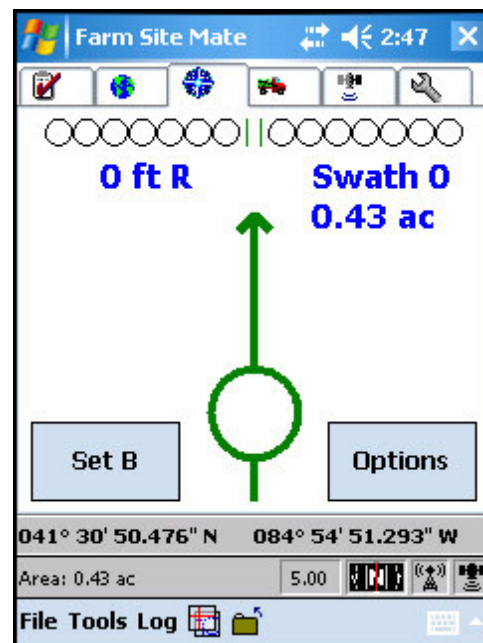
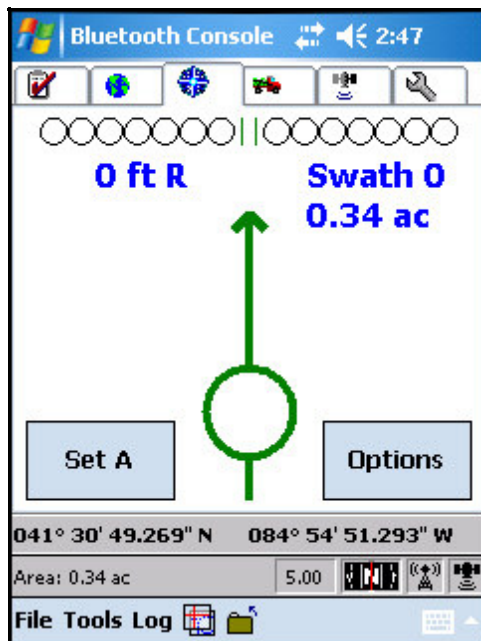


## STEP 5: Using Guide Mate

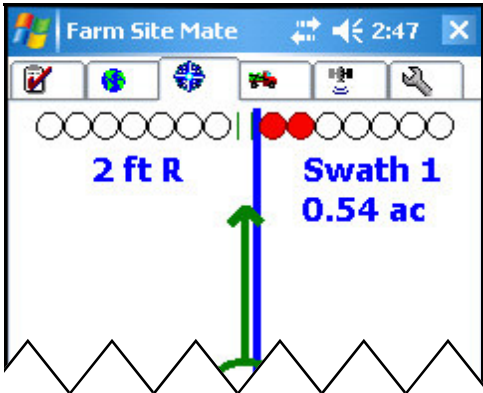
1. Tap the **Guidance** tab, and enter the values in the **Swath Pattern** list and **Swath Width** box.



2. Tap **Start Guidance**.
3. The MicroGuide lightbar will now have two green lights activated in the middle. This indicates the lightbar is ready to perform.  
*(\*Note: you will need to be receiving GPS signal for the lights to change on the MicroGuide.)*
4. Set the A and B points for guidance.



- 5. The lights on the MicroGuide lightbar will correspond with the indicator on the **Guidance** tab and the lights at the top of the **Map** tab indicating the direction that you should steer.



iPAQ Screen View



MicroGuide View