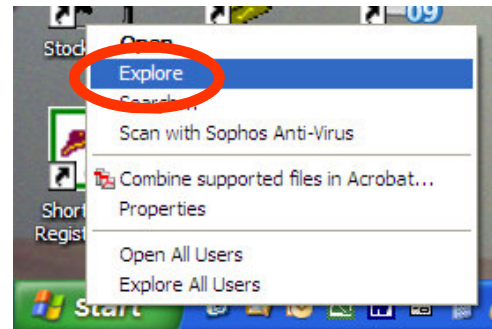


FAQs

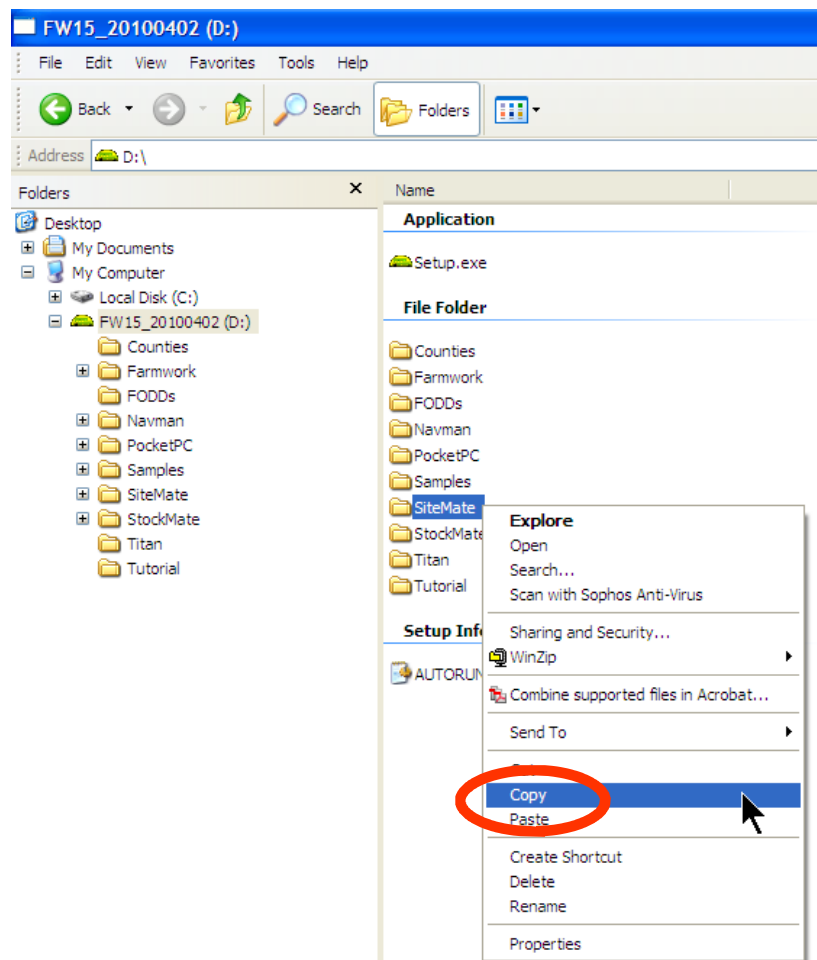
Version 2010 or higher

Installing Software on the Yuma™

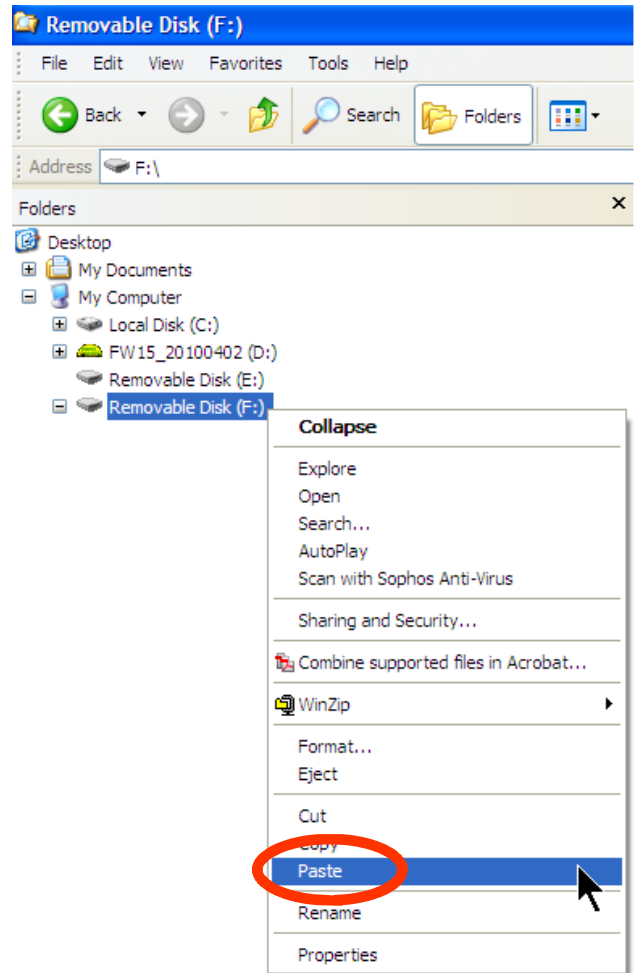
1. Insert the most recent version of Farm Works™ into your CD/DVD drive.
2. Insert a USB storage device into an available USB port on the computer (note that the USB storage device should have at least 30 MB of free space available).
3. Go to Windows Explorer. This can be done by right-clicking on the **Start** button and selecting **Explore**.



4. Browse the contents of the CD and right-click on the "Site Mate" folder and select **Copy**.



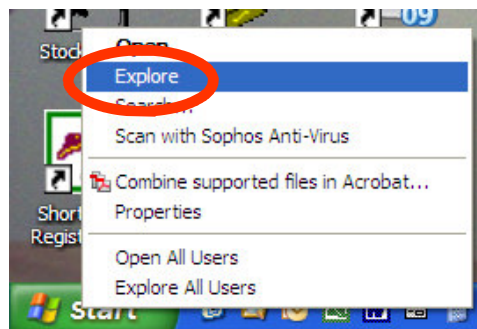
5. Browse the contents of the USB drive and right-click and select **Paste**. This will paste the installer for Site Mate to the USB storage device.



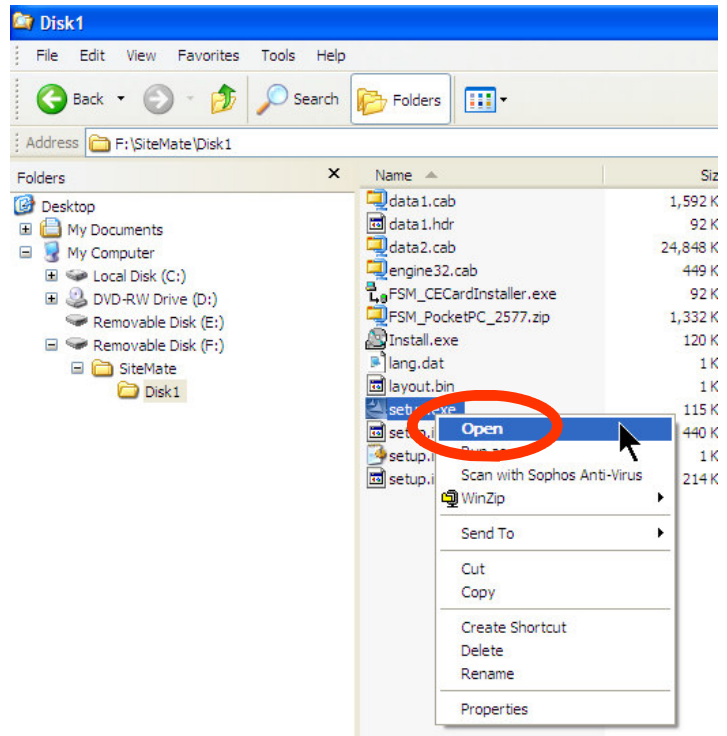
- 6. Eject the USB drive from the desktop computer.
- 7. Take the USB drive to the Yuma and place it in an available USB port.



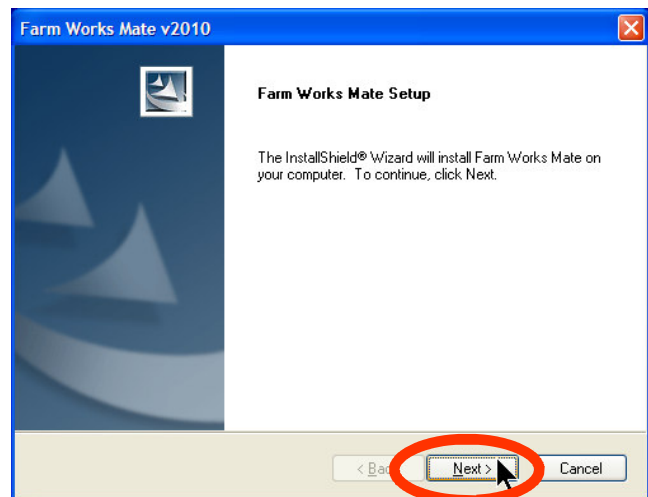
8. Go to Windows Explorer on the Yuma.



9. Browse the USB storage device and go to the "Site Mate" folder and select the "Disk 1" folder and run/open the file "Setup.exe".



10. The Farm Works installer box will appear. Click the **Next** button to proceed through the install wizard.







After the software is installed, you will need to register it the first time that you run it. To obtain your registration numbers, contact Farm Works Software at 1-800-225-2848. Registration numbers can also be obtained by going to www.farmworks.com/register/. When registering you will need the following information:

- Your First and Last Name/Company or Farm Name (optional)/Address/Phone/E-mail address
- Software product codes
- The Machine ID. This is displayed on the "Register" screen that appears when you first run the software.

Farm Works Information Management
A Division of Trimble
P.O. Box 250
Hamilton, IN 46742
USA
www.farmworks.com



 +1 800-282-4103
 +1 888-309-4990
 +44 1786-465100
 +1 260-488-3492

